

**RESPONSE TO ITEM 1-3 OF THE DECISION OF DÉL-DUNÁNTÚLI KÖRNYEZETVÉDELMI, TERMÉSZETVÉDELMI ÉS VÍZÜGYI FELÜGYELŐSÉG (SOUTH-TRANSDANUBIAN ENVIRONMENTAL, NATURE CONSERVATION AND WATER MANAGEMENT INSPECTORATE) No. 755-19/2014 FOR SUPPLEMENTING THE MISSING ITEMS REGARDING THE „ENVIRONMENTAL IMPACT ASSESSMENT PROCEDURE OF THE NEW POWER PLANT UNITS PLANNED TO BE CONSTRUCTED BY MVM PAKS II ATOMERŐMŰ FEJLESZTŐ ZRT (MVM PAKS II NUCLEAR POWER PLANT DEVELOPMENT LTD) ON THE SITE OF TOPOGRAPHICAL LOT NUMBER PAKS 8803 OF THE PAKS NUCLEAR POWER PLANT**

**1. Please provide us the data of the space needed for the construction of the planned 400 kV unit line and the reserve supply 120 kV transmission line**

Please find enclosed the data of the space needed for the construction of the transmission lines:

Topographical lot number	Regional classification		During construction	During operation	Amount of area (m <sup>2</sup> )
023/29	Má-á (General (characteristically arable land) agricultural areas)	Paks	+	+	20564
023/30	Má-á (General (characteristically arable land) agricultural areas)	Paks	+	+	15872
023/31	Má-á (General (characteristically arable land) agricultural areas)	Paks	+		24160
050/4	Ev Forest area to be protected (protection area (protected and protecting area))	Paks	+		7403
050/9	KÖu-2k (Traffic areas (primary main road))	Paks	+	+	294
050/12	KÖu-2k (Traffic areas (primary main road))	Paks	+	+	684
050/13	Ev Forest area to be protected (protection area (protected and protecting area))	Paks	+	+	2378
050/15	Ev Forest area to be protected (protection area (protected and protecting area))	Paks	+	+	872
050/16	Ev Forest area to be protected (protection area (protected and protecting area))	Paks	+	+	247
050/17	KÖu-2k (Traffic areas (primary main road))	Paks	+	+	2104
050/18	KÖu-2k (Traffic areas (primary main road))	Paks	+	+	444
050/19	KÖu-2k (Traffic areas (primary main road))	Paks	+		2143
050/20	Ev Forest area to be protected (protection area (protected and protecting area))	Paks	+	+	52463
0278/1	Eg (Forest area for economic/business destination)	Paks	+	+	104694
0278/2	KÖu-1k (Traffic areas (highway))	Paks	+	+	130010
0278/3	Eg (Forest area for economic/business destination)	Paks	+	+	184300
0312/2	Eg (Forest area for economic/business destination); Ev (Forest area to be protected (protected and protecting area))	Paks	+		2553
0312/3	Eg (Forest area for economic/business destination)	Paks	+	+	142872
0312/4	KÖu-2k Traffic areas (primary main road))	Paks	+	+	154
0313/1	KÖu-4k (Traffic areas (connecting and access roads))	Paks	+	+	1962
0315/2	Eg (Forest area for economic/business destination)	Paks	+	+	5404
0317/4	Má-á (General (characteristically arable land) agricultural areas)	Paks	+	+	11507
0317/6	Má-á (General (characteristically arable land) agricultural areas)	Paks	+	+	17270

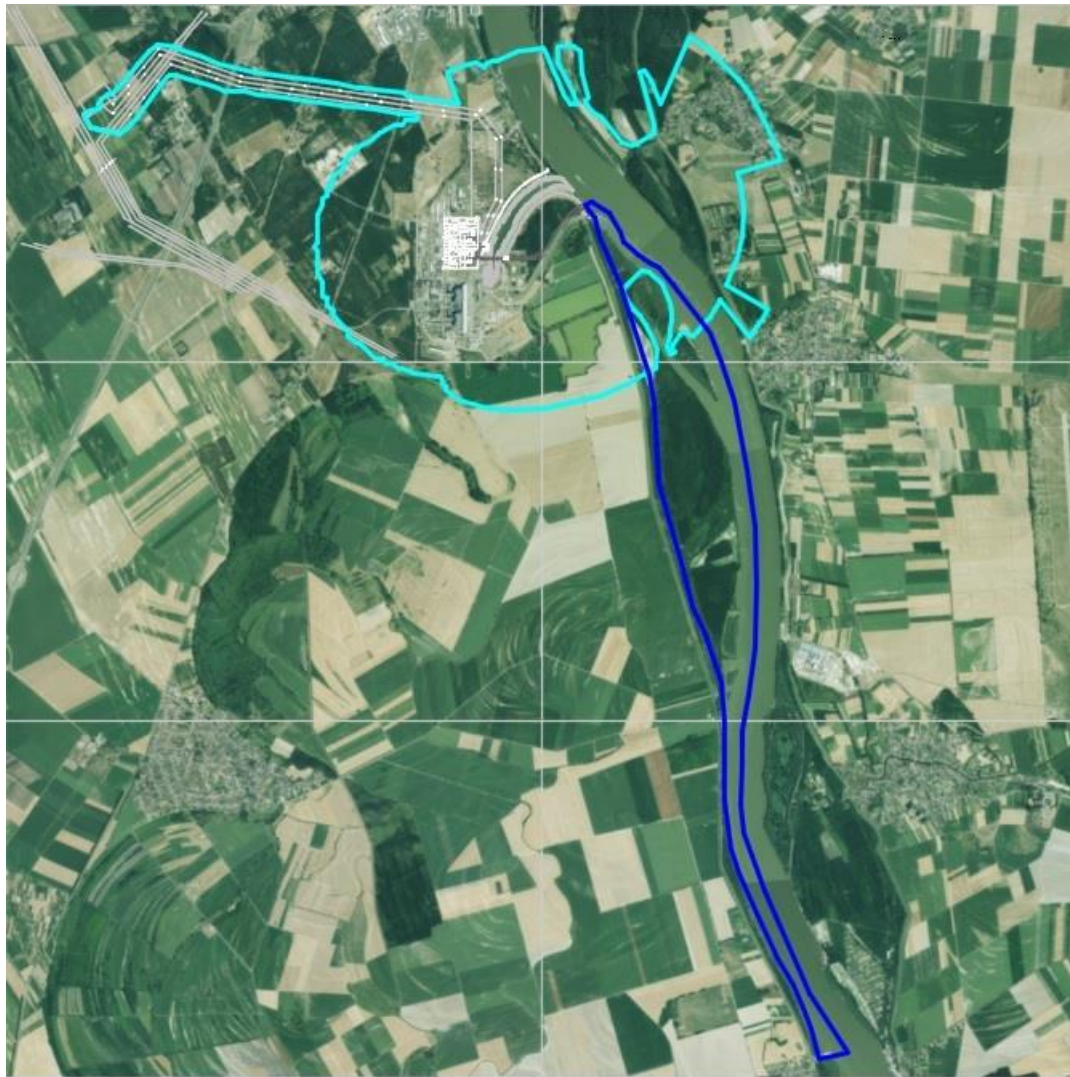
Topographical lot number	Regional classification		During construction	During operation	Amount of area (m <sup>2</sup> )
0318	Ev Forest area to be protected (protection area (protected and protecting area))	Paks	+	+	3256
0319	Ev Forest area to be protected (protection area (protected and protecting area))	Paks	+	+	796
0320/1	Ev Forest area to be protected (protection area (protected and protecting area))	Paks	+	+	50704
0320/2	V-4 (Water management areas (waterworks wells, waterworks facilities))	Paks	+	+	480
0321	Ev Forest area to be protected (protection area (protected and protecting area))	Paks	+	+	782
0322	Eg (Forest area for economic/business destination)	Paks	+	+	79827
0323	KÖu-4k (Traffic area (connecting and access roads))	Paks	+	+	3763
0324	Eg (Forest area for economic/business destination)	Paks	+	+	242831
0325	Eg (Forest area for economic/business destination), Ev (Forest area to be protected (protection area (protected and protecting area)))	Paks	+	+	5844
0326/2	Ev Forest area to be protected (protection area (protected and protecting area))	Paks	+		4505
0327	Ev Forest area to be protected (protection area (protected and protecting area))	Paks	+		723
0328	Ev Forest area to be protected (protection area (protected and protecting area))	Paks	+	+	978
0329/1	Ev Forest area to be protected (protection area (protected and protecting area))	Paks	+	+	43516
0329/2	Ev Forest area to be protected (protection area (protected and protecting area))	Paks	+	+	4730
0330	Ev Forest area to be protected (protection area (protected and protecting area))	Paks	+	+	1168
0331	Ev Forest area to be protected (protection area (protected and protecting area))	Paks	+	+	60458
0345/2	Ev Forest area to be protected (protection area (protected and protecting area))	Paks	+	+	56002
0349/2	Eg (Forest area for economic/business destination)	Paks	+	+	3597
0351/1	Köu-3k (Traffic areas (national secondary road))	Paks	+	+	45243
0352/2	V-4 (Water management areas (waterworks wells, water works facilities))	Paks	+	+	965
0352/3	Eg (Forest area for economic/business destination)	Paks	+	+	53280
0352/5	Eg (Forest area for economic/business destination)	Paks	+	+	3501
0352/6	Eg (Forest area for economic/business destination)	Paks	+	+	127012
0355	V (Water management area)	Paks	+	+	6438
0356/1	Eg (Forest area for economic/business destination)	Paks	+	+	53220
0356/2	Eg (Forest area for economic/business destination)	Paks	+	+	2923
0356/3	Eg (Forest area for economic/business destination)	Paks	+	+	7996
0356/5	Eg (Forest area for economic/business destination), Ev Forest area to be protected (protection area (protected and protecting area))	Paks	+	+	29486
0357	Köu-6k (Access and residential roads (major agricultural roads))	Paks	+	+	5237
0358/2	Kmü (Agricultural areas)	Paks	+	+	69914

Topographical lot number	Regional classification		During construction	During operation	Amount of area (m <sup>2</sup> )
0359/2	Eg (Forest area for economic/business destination)	Paks	+	+	9749
0359/3	Eg (Forest area for economic/business destination)	Paks	+	+	37270
0359/5	Eg (Forest area for economic/business destination)	Paks	+	+	29574
0360	Má-á (General (characteristically arable land) agricultural areas)	Paks	+	+	1703
0361	Eg (Forest area for economic/business destination)	Paks	+	+	149393
0365/5	Má-á (General (characteristically arable land) agricultural areas)	Paks	+	+	703
0366	Má-á (General (characteristically arable land) agricultural areas), Eg (Forest area for economic/business destination)	Paks	+	+	1949
0367/6	Eg (Forest area for economic/business destination)	Paks	+		4447
0367/7	Eg (Forest area for economic/business destination)	Paks	+		4452
0367/8	Eg (Forest area for economic/business destination)	Paks	+		3511
0367/11	Eg (Forest area for economic/business destination)	Paks	+	+	10761
0367/12	Eg (Forest area for economic/business destination)	Paks	+	+	15176
0367/14	Eg (Forest area for economic/business destination)	Paks	+	+	3573
0367/17	Eg (Forest area for economic/business destination)	Paks	+	+	17583
0367/19	Eg (Forest area for economic/business destination)	Paks	+	+	2390
0367/21	Eg (Forest area for economic/business destination)	Paks	+		13609
0368	Eg (Forest area for economic/business destination)	Paks	+	+	2576
0369/5	Kmü (Agricultural area)	Paks	+	+	49910
0369/6	Má-á (General (characteristically arable land) agricultural areas)	Paks	+	+	1355
0369/7	Má-á (General (characteristically arable land) agricultural areas)	Paks	+	+	4070
0369/8	Má-á (General (characteristically arable land) agricultural areas)	Paks	+	+	12909
0370	Köu-5k (access roads and regional roads (other roads of local importance))	Paks	+	+	7585
0373/3	Má-á (General (characteristically arable land) agricultural areas)	Paks	+	+	302694
0373/9	Má-á (General (characteristically arable land) agricultural areas)	Paks	+	+	32645
0373/10	Má-á (General (characteristically arable land) agricultural areas)	Paks	+	+	47915
0373/15	Má-á (General (characteristically arable land) agricultural areas)	Paks	+	+	14905
0373/16	Má-á (General (characteristically arable land) agricultural areas)	Paks	+	+	17915
8802/10	Gip-1.4, SZ/50, 14/3000 (Industrial zone (Area of the existing and planned industrial sites of Paks Industrial Zone))	Paks	+	+	509544
8802/19	Gip-1.4, SZ/50, 14/3000 (Industrial, economic area (Industrial zone (Area of the existing and planned industrial sites of Paks Industrial Zone))	Paks	+	+	127033
8803/9	Kz-vsp, SZ/20, 12/5000 (Specific green surface area (Water sport facility))	Paks	+		25271

Table 1: Data of the space needed for the construction of the 400 kV unit line and the 120 kV transmission line

**2. Please supplement Figures 22.2.2-1 and 22.2.2-2 included in Chapter 22.2.2 „The cumulated impact area of the operating Paks II”, of the Environmental Impact Study, with regard to the impact area of thermal load caused by emission of cooling water in row three of the Table „The impacts of the combined operation of Paks II and Paks Nuclear Power Plant”.**

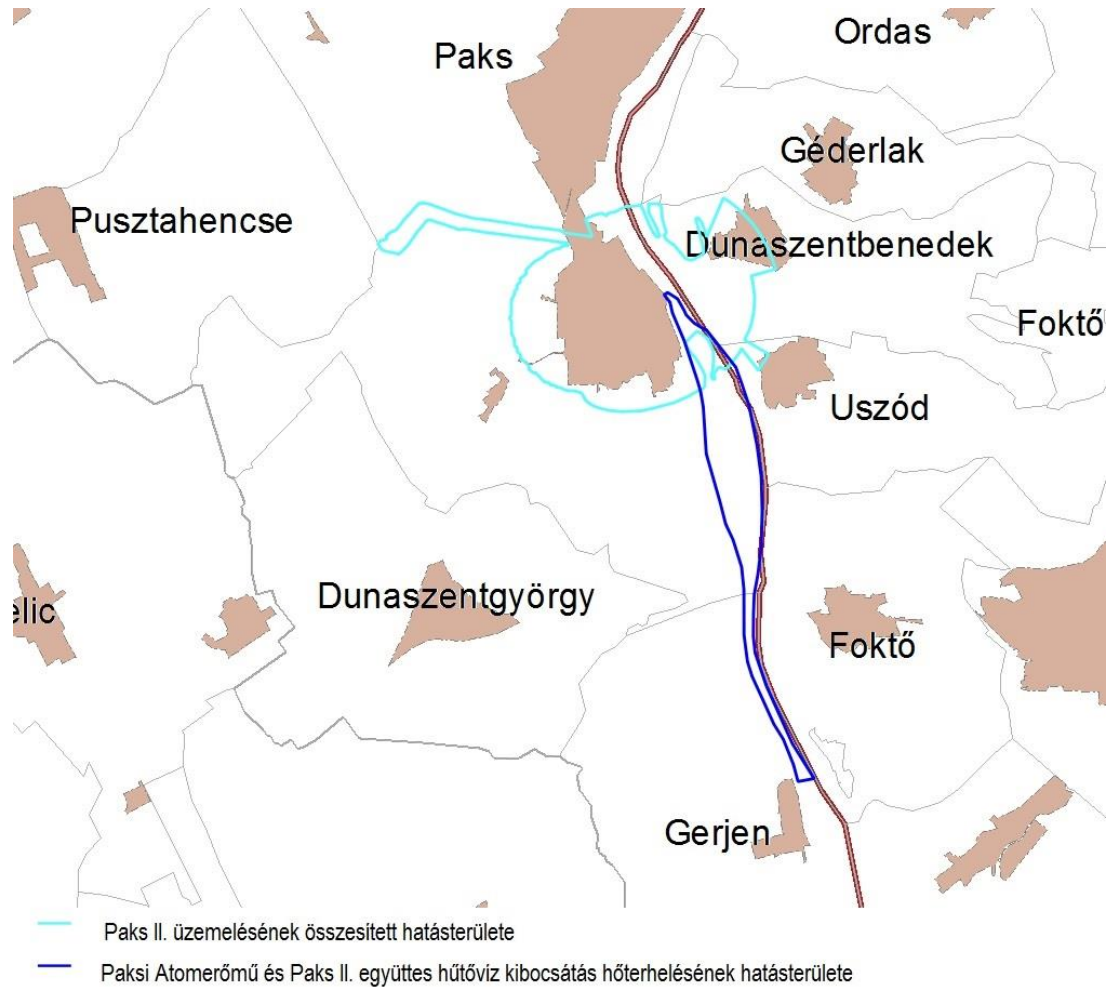
Please find enclosed the Figures supplemented as requested:



- Paks II. üzemelésének összesített hatásterülete
- Paksi Atomerőmű és Paks II. együttes hűtővíz kibocsátás hőterhelésének hatásterülete

Paks II. üzemelésének összesített hatásterülete – The cumulated impact area of the operating Paks II  
Paksi Atomerőmű és Paks II. együttes hűtővíz kibocsátás hőterhelésének hatásterülete –The combined impact area of thermal load caused by emission of cooling water from Paks Nuclear Power Plant and Paks II

*Figure 1: The cumulated impact area of the operating Paks II, as well as the combined impact area of thermal load caused by emission of cooling water from Paks Nuclear Power Plant and Paks II*



Paks II. üzemelésének összesített hatásterülete – The cumulated impact area of the operating Paks II  
Paksi Atomerőmű és Paks II. együttes hűtővíz kibocsátás hőterhelésének hatásterülete –The combined impact area of thermal load caused by emission of cooling water from Paks Nuclear Power Plant and Paks II

Figure 2: The cumulated impact area of the operating Paks II, as well as the combined impact area of thermal load caused by emission of cooling water from Paks Nuclear Power Plant and Paks II, showing the administrative borders

**3. The administrative areas of the municipalities situated within the impact area of the thermal load caused by emission of cooling water from the new units are determined on the basis of the supplemented Figures in item 2 above.**

The administrative areas of the following municipalities are within the impact area of the thermal load caused by emission of cooling water from the new units:

- Paks,
- Dunaszentbenedek,
- Uszód,
- Foktő,
- Gerjen.